



## Al Mustafa Welfare Trust Eye Hospital



Al Mustafa Welfare Trust

110 High Street, Hounslow TW3 1NA

## Table of Contents

Project Overview.....	2
Numbers till 2020 Life-changing cataract treatments .....	2
Project Objectives .....	2
Main Objectives of this proposal .....	3
Limitations in field eye camps.....	3
Required Equipment for the Eye Hospital .....	4
Refractometer .....	5
Slit Lamp.....	6
Trial Lens Set .....	6
Lens Meter .....	7
Auto chart projector .....	7
Ophthalmoscope.....	8
Retinoscope .....	8
Heine Charger .....	9
Heine Binocular.....	9
Volk Lens .....	9
Vision testing book.....	10
Phaco emulsification machine .....	10
Operation Microscope .....	11
Ultrasound biometer.....	12
Total Budget of the Project.....	12
Project Location and Pictures .....	12

## Project Overview

Al Mustafa Welfare Trust leads eye cataract surgery campaigns to cure 250,000 people diagnosed with treatable blindness globally. With our donors' generous support, we have achieved 101,000+ eye surgeries. In this proposal you will find detailed documentation about how we have managed to deliver on this great cause through our systematic project planning, budgeting and procedural approach to ensure the maintenance of project records and providing our stakeholders with transparent and consistent feedback. This proposal shows our commitment and transparency in adapting your thoughts into our planning.

### Numbers till 2020 Life-changing cataract treatments

- **101,524** Cataract Surgeries performed
- **601,792** OPD (Screening)
- **252,271** Hepatitis Screening
- **498,000** Eye Glasses Distribution
- **506** School Base Eye Camps
- **64,000** Children with disabilities supported to attend school
- **1021** people with disabilities supported for the business

## Project Objectives

Blindness has profound human and socioeconomic consequences. The costs of lost productivity and of rehabilitation and education of the blind constitute a significant economic burden for the individual, the family and the society. Poverty and blindness are positively interrelated. Blindness cause the poverty and poverty again leads towards having no access to medication. In developing regions such as South East Asia, East Africa blindness is associated with poverty; lower access to eye care services is one contributory of main factor. To reduce blindness, this group of people in the society requires attention and help. Naturally, these interventions will have a positive impact in developing part of the world.

The cataract services Pakistan has grown to a high level and this can be attributed to increased awareness, creating the access and making the cataract services available at an affordable cost including a large portion of it being provided free. This process has increased the awareness enormously in the community. Now the patients voluntarily seek cataract surgery, both at eye camps and at base hospitals. The need now is to replicate a similar model for the emerging eye conditions.

**Al Mustafa Welfare Trust** has helped 101,000 people to come out of the poverty-blindness cycle since 1985. Some of 50% were women and elderly people. Supporting blind people to restore their eyesight also restores human dignity through education and income prosperity at individual and national levels.

## Main Objectives of this proposal

Al Mustafa Welfare Trust has been changing lives of the most vulnerable section of the populations by returning the gift of sight to people. AMWT has conducted more than 101,000 cataract surgeries till date and conducted more than 600,000 OPD screenings. All these numbers have been achieved in eye camps set up in the areas where health facilities such as eye hospitals are not available for residents. However, with the efforts of our local ground team and with the support of our generous donor base in Pakistan, AMWT has been able to secure a site where a permanent eye hospital could be established. This is a rare opportunity that has been presented to us and we want to make the most out of this occasion as this could increase our capability to conduct eye surgeries manifold.

## Limitations in field eye camps

- In almost every eye camp that AMWT has set up in the field, we always come across some complex cases that cannot be treated in field eye camps.
- Numerous children that come to our eye camps however we are legally not allowed to treat them at a field eye camp (as anaesthesia cannot be administered on minors in field eye camps).
- Another limitation that is posed is the weather dependency. In all the years that AMWT has been setting up eye camps for treating people with vision related issues, we still haven't been able to overcome the weather-related issues. We can still hold eye camps only during certain months of the year (March to May and September to November). As it is either very cold or very hot to hold field eye camps and treat patients there.

Having a permanent eye hospital will enable Al Mustafa Welfare Trust to overcome all these issues and reach out to more deserving people.

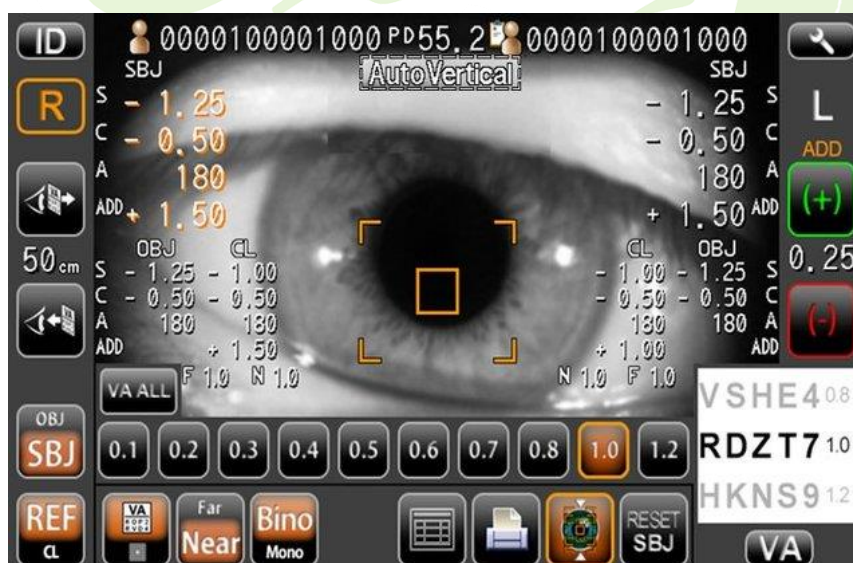
## Required Equipment for the Eye Hospital

Equipment	Maker
Topcon Auto Kerato-Refractometer Model KR-800	Topcon Corporation/Japan
Topcon Computerized Tonometer CT-800	Topcon Corporation/Japan
Topcon Slit Lamp SL-D301	Haag Streit/Switzerland
Optional: Photographic Module	
Goldmann Applanation Tonometer R-type	
Trial Lens Set Model CT4305K/A	Canton Optics/China
Topcon Coputerized lens meter model CL-300 Compact	Topcon Corporation/Japan
Auto chart projector model ACP-8EM with B type charts	Topcon Corporation/Japan
Heine Ophthalmoscope model Beta-200	Heine Optotechnik/Germany
Heine Streak Retinoscope model Beta 200	
Heine Dual Desk Charger NT 300	
Heine Binocular indirect ophthalmoscope all-pupil model sigma 150K headband type	Heine/Germany
a) Volk 20D lens	Volk Pptical (U.S.A.)
b) Volk 30D Lens	Volk Pptical (U.S.A.)
c) Volk 78D Lens	Volk Pptical (U.S.A.)
d) Volk 90D Lens	Volk Pptical (U.S.A.)
e) Original Goldmann 1-mirror contact glass 902	Haag Streit (Switzerland)
f) Original Goldmann 3-mirror contact glass small 630	Haag Streit (Switzerland)
Ishihara color vision testing book of 24 plates,	(Japan)
OT Equipment	
Complete Interior Segment Surgical System model "Light Sonic Pro" Phaco emulsification	Light Med (USA)
<i>Optional Accessories:</i>	
a) Second Phaco hand piece	
b) Infusion sleeve blue (pack of 5)	
c) Reusable I/A tubing	
d) U/S phaco tip	
e) U/S phaco test chamber (pack of 5)	
f) Guillotine vitrectomy cutter	
g) I/A hand piece with titanium aspiration tip	
h) Bipolar forceps straight	
i) Reusable bipolar cautery Lead	



Topcon Operation Microscope model OMS-90	Topcon Corporation/Japan
Optional:	
X-Y translator for precise movements around the surgical field	
Sonomed Digital ophthalmic ultrasound biometer model PacScan 300A+	Sonomed Escalon/USA
Cautery Bipola	Kirwan Surgical Inc./U.S.A.
Auto Clave	Local Made
Hot Air Oven	
Surgical Instruments	Local Made
O.T. Accessories	Local Made

## Refractometer





**Al-Mustafa  
Welfare Trust®**  
Serving humanity since 1983  
Charity Number: 1118492

Slit Lamp



Trial Lens Set



## Lens Meter



## Auto chart projector

 TOPCON

AUTO CHART PROJECTOR  
**ACP-8<sup>R</sup>** NEW





## Ophthalmoscope



## Retinoscope



Heine Charger



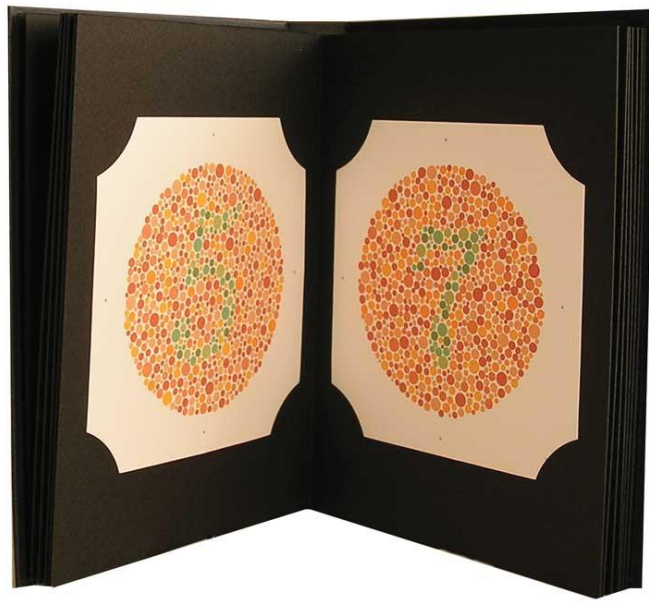
Heine Binocular



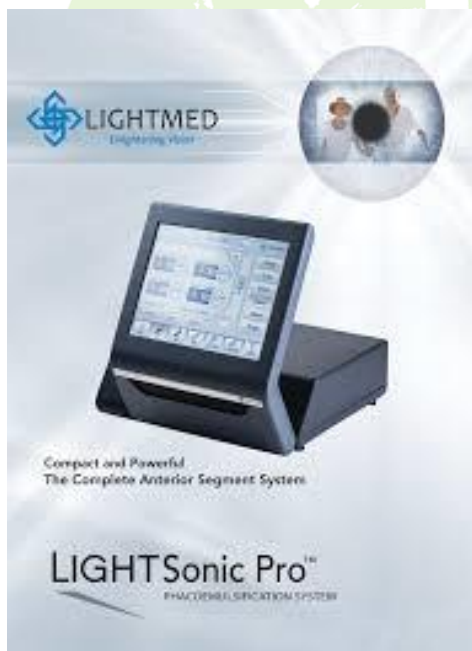
Volk Lens



Vision testing book

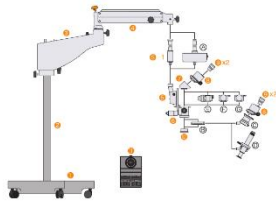


Phaco emulsification machine



## Operation Microscope

### System Chart



- 1 Base
- 2 Column
- 3 1st Arm
- 4 2nd Arm
- 5 Focusing Unit
- 6 1st Arm
- 7 Microscope Body
- 8 45° inclined Adapter
- 9 Parallel Binocular Tube
- 10 12.5x Eyepiece
- 11 P=200mm Objective Lens
- 12 Foot Switch

- < Optional Accessories >
- 13 X-Y Translator
  - 14 Accessory Adapter Model 2
  - 15 Assistant's Microscope
  - 16 Choke Illuminator
  - 17 1/2" TV Attachment
  - 18 Beam Splitter(SO/50)

### Specifications

<b>Main microscope</b>	
Binocular tube	Parallel 45° inclined binocular tube
Objective lens	P=200mm
Eyepiece	12.5x
Magnification change type	Drum type with 5 changes
Total magnification	3.4x, 5.3x, 8.5x, 13.6x, 21.2x
Field of view	φ66.5, φ42.3, φ26.5, φ17.1, φ10.3mm
X-Y Translator (option)	Range: 720mm
<b>Arm(counter-balanced)</b>	
Length	1st arm:400mm; 2nd arm:560mm
Rotational angle	1st arm:360°; 2nd arm:300°
Column base	12.5x
Base dimension	φ740mm (30")
Power unit	
Primary voltage	AC100-120V or AC220-240V
Power frequency	50/60Hz
Maximum power consumption	280VA
Weight	
Weight	97kg

\*Subject to change in design and/or specifications without notice.  
\*In compliance with the terms of the CE Marking Regulation of the  
EU, the CE Marking is a declaration of conformity with the CE Marking  
Regulation. In order to obtain the CE Marking, the manufacturer must  
declare the conformity of the product with the CE Marking Regulation.



### TOPCON CORPORATION

1-1-1 Higashi-Shinjuku, Bldg. 1F, Shinjuku-ku, Tokyo 162-8601, Japan  
Phone: 81-3-3354-0101 Fax: 81-3-3354-0102

**TOPCON MEDICAL SYSTEMS, INC.**  
10000 Wilshire Blvd., Suite 1000, Los Angeles, CA 90024, U.S.A.  
Phone: 1-800-541-7878 Fax: 1-800-541-7879

**TOPCON CANADA INC.**  
10000 Wilshire Blvd., Suite 1000, Los Angeles, CA 90024, U.S.A.  
Phone: 1-800-541-7878 Fax: 1-800-541-7879

**TOPCON EUROPE MEDICAL B.V.**  
10000 Wilshire Blvd., Suite 1000, Los Angeles, CA 90024, U.S.A.  
Phone: 1-800-541-7878 Fax: 1-800-541-7879

**TOPCON DEUTSCHLAND G.M.B.H.**  
10000 Wilshire Blvd., Suite 1000, Los Angeles, CA 90024, U.S.A.  
Phone: 1-800-541-7878 Fax: 1-800-541-7879

**TOPCON SCANDINAVIA A.B.**  
10000 Wilshire Blvd., Suite 1000, Los Angeles, CA 90024, U.S.A.  
Phone: 1-800-541-7878 Fax: 1-800-541-7879

**TOPCON SPAIN S.A.**  
10000 Wilshire Blvd., Suite 1000, Los Angeles, CA 90024, U.S.A.  
Phone: 1-800-541-7878 Fax: 1-800-541-7879

**TOPCON ITALY S.p.A.**  
10000 Wilshire Blvd., Suite 1000, Los Angeles, CA 90024, U.S.A.  
Phone: 1-800-541-7878 Fax: 1-800-541-7879

**TOPCON (GREAT BRITAIN) LTD.**  
10000 Wilshire Blvd., Suite 1000, Los Angeles, CA 90024, U.S.A.  
Phone: 1-800-541-7878 Fax: 1-800-541-7879

**TOPCON POLSKA Sp. z o.o.**  
10000 Wilshire Blvd., Suite 1000, Los Angeles, CA 90024, U.S.A.  
Phone: 1-800-541-7878 Fax: 1-800-541-7879

**TOPCON SINGAPORE MEDICAL PTE. LTD.**  
10000 Wilshire Blvd., Suite 1000, Los Angeles, CA 90024, U.S.A.  
Phone: 1-800-541-7878 Fax: 1-800-541-7879

**TOPCON S.A.R.L.**  
10000 Wilshire Blvd., Suite 1000, Los Angeles, CA 90024, U.S.A.  
Phone: 1-800-541-7878 Fax: 1-800-541-7879

**TOPCON (INDONESIA) PT. LTD.**  
10000 Wilshire Blvd., Suite 1000, Los Angeles, CA 90024, U.S.A.  
Phone: 1-800-541-7878 Fax: 1-800-541-7879

**TOPCON (MALAYSIA) SDN. BHD.**  
10000 Wilshire Blvd., Suite 1000, Los Angeles, CA 90024, U.S.A.  
Phone: 1-800-541-7878 Fax: 1-800-541-7879

**TOPCON (THAILAND) CO. LTD.**  
10000 Wilshire Blvd., Suite 1000, Los Angeles, CA 90024, U.S.A.  
Phone: 1-800-541-7878 Fax: 1-800-541-7879

**TOPCON CORPORATION BEIJING OFFICE**  
10000 Wilshire Blvd., Suite 1000, Los Angeles, CA 90024, U.S.A.  
Phone: 1-800-541-7878 Fax: 1-800-541-7879

**TOPCON CORPORATION SHANGHAI OFFICE**  
10000 Wilshire Blvd., Suite 1000, Los Angeles, CA 90024, U.S.A.  
Phone: 1-800-541-7878 Fax: 1-800-541-7879

**TOPCON CORPORATION DUBAI OFFICE**  
10000 Wilshire Blvd., Suite 1000, Los Angeles, CA 90024, U.S.A.  
Phone: 1-800-541-7878 Fax: 1-800-541-7879

**TOPCON CORPORATION DUBAI OFFICE**  
10000 Wilshire Blvd., Suite 1000, Los Angeles, CA 90024, U.S.A.  
Phone: 1-800-541-7878 Fax: 1-800-541-7879

**TOPCON CORPORATION DUBAI OFFICE**  
10000 Wilshire Blvd., Suite 1000, Los Angeles, CA 90024, U.S.A.  
Phone: 1-800-541-7878 Fax: 1-800-541-7879

**TOPCON CORPORATION DUBAI OFFICE**  
10000 Wilshire Blvd., Suite 1000, Los Angeles, CA 90024, U.S.A.  
Phone: 1-800-541-7878 Fax: 1-800-541-7879

**TOPCON CORPORATION DUBAI OFFICE**  
10000 Wilshire Blvd., Suite 1000, Los Angeles, CA 90024, U.S.A.  
Phone: 1-800-541-7878 Fax: 1-800-541-7879

**TOPCON CORPORATION DUBAI OFFICE**  
10000 Wilshire Blvd., Suite 1000, Los Angeles, CA 90024, U.S.A.  
Phone: 1-800-541-7878 Fax: 1-800-541-7879

**TOPCON CORPORATION DUBAI OFFICE**  
10000 Wilshire Blvd., Suite 1000, Los Angeles, CA 90024, U.S.A.  
Phone: 1-800-541-7878 Fax: 1-800-541-7879

**TOPCON CORPORATION DUBAI OFFICE**  
10000 Wilshire Blvd., Suite 1000, Los Angeles, CA 90024, U.S.A.  
Phone: 1-800-541-7878 Fax: 1-800-541-7879

**TOPCON CORPORATION DUBAI OFFICE**  
10000 Wilshire Blvd., Suite 1000, Los Angeles, CA 90024, U.S.A.  
Phone: 1-800-541-7878 Fax: 1-800-541-7879

**TOPCON CORPORATION DUBAI OFFICE**  
10000 Wilshire Blvd., Suite 1000, Los Angeles, CA 90024, U.S.A.  
Phone: 1-800-541-7878 Fax: 1-800-541-7879

**TOPCON CORPORATION DUBAI OFFICE**  
10000 Wilshire Blvd., Suite 1000, Los Angeles, CA 90024, U.S.A.  
Phone: 1-800-541-7878 Fax: 1-800-541-7879

**TOPCON CORPORATION DUBAI OFFICE**  
10000 Wilshire Blvd., Suite 1000, Los Angeles, CA 90024, U.S.A.  
Phone: 1-800-541-7878 Fax: 1-800-541-7879

**TOPCON CORPORATION DUBAI OFFICE**  
10000 Wilshire Blvd., Suite 1000, Los Angeles, CA 90024, U.S.A.  
Phone: 1-800-541-7878 Fax: 1-800-541-7879

**TOPCON CORPORATION DUBAI OFFICE**  
10000 Wilshire Blvd., Suite 1000, Los Angeles, CA 90024, U.S.A.  
Phone: 1-800-541-7878 Fax: 1-800-541-7879

**TOPCON CORPORATION DUBAI OFFICE**  
10000 Wilshire Blvd., Suite 1000, Los Angeles, CA 90024, U.S.A.  
Phone: 1-800-541-7878 Fax: 1-800-541-7879

**TOPCON CORPORATION DUBAI OFFICE**  
10000 Wilshire Blvd., Suite 1000, Los Angeles, CA 90024, U.S.A.  
Phone: 1-800-541-7878 Fax: 1-800-541-7879

**TOPCON CORPORATION DUBAI OFFICE**  
10000 Wilshire Blvd., Suite 1000, Los Angeles, CA 90024, U.S.A.  
Phone: 1-800-541-7878 Fax: 1-800-541-7879

**TOPCON CORPORATION DUBAI OFFICE**  
10000 Wilshire Blvd., Suite 1000, Los Angeles, CA 90024, U.S.A.  
Phone: 1-800-541-7878 Fax: 1-800-541-7879

**TOPCON CORPORATION DUBAI OFFICE**  
10000 Wilshire Blvd., Suite 1000, Los Angeles, CA 90024, U.S.A.  
Phone: 1-800-541-7878 Fax: 1-800-541-7879

**TOPCON CORPORATION DUBAI OFFICE**  
10000 Wilshire Blvd., Suite 1000, Los Angeles, CA 90024, U.S.A.  
Phone: 1-800-541-7878 Fax: 1-800-541-7879

**TOPCON CORPORATION DUBAI OFFICE**  
10000 Wilshire Blvd., Suite 1000, Los Angeles, CA 90024, U.S.A.  
Phone: 1-800-541-7878 Fax: 1-800-541-7879

**TOPCON CORPORATION DUBAI OFFICE**  
10000 Wilshire Blvd., Suite 1000, Los Angeles, CA 90024, U.S.A.  
Phone: 1-800-541-7878 Fax: 1-800-541-7879

**TOPCON CORPORATION DUBAI OFFICE**  
10000 Wilshire Blvd., Suite 1000, Los Angeles, CA 90024, U.S.A.  
Phone: 1-800-541-7878 Fax: 1-800-541-7879

**TOPCON CORPORATION DUBAI OFFICE**  
10000 Wilshire Blvd., Suite 1000, Los Angeles, CA 90024, U.S.A.  
Phone: 1-800-541-7878 Fax: 1-800-541-7879

**TOPCON CORPORATION DUBAI OFFICE**  
10000 Wilshire Blvd., Suite 1000, Los Angeles, CA 90024, U.S.A.  
Phone: 1-800-541-7878 Fax: 1-800-541-7879

**TOPCON CORPORATION DUBAI OFFICE**  
10000 Wilshire Blvd., Suite 1000, Los Angeles, CA 90024, U.S.A.  
Phone: 1-800-541-7878 Fax: 1-800-541-7879

**TOPCON CORPORATION DUBAI OFFICE**  
10000 Wilshire Blvd., Suite 1000, Los Angeles, CA 90024, U.S.A.  
Phone: 1-800-541-7878 Fax: 1-800-541-7879

**TOPCON CORPORATION DUBAI OFFICE**  
10000 Wilshire Blvd., Suite 1000, Los Angeles, CA 90024, U.S.A.  
Phone: 1-800-541-7878 Fax: 1-800-541-7879

**TOPCON CORPORATION DUBAI OFFICE**  
10000 Wilshire Blvd., Suite 1000, Los Angeles, CA 90024, U.S.A.  
Phone: 1-800-541-7878 Fax: 1-800-541-7879

**TOPCON CORPORATION DUBAI OFFICE**  
10000 Wilshire Blvd., Suite 1000, Los Angeles, CA 90024, U.S.A.  
Phone: 1-800-541-7878 Fax: 1-800-541-7879

**TOPCON CORPORATION DUBAI OFFICE**  
10000 Wilshire Blvd., Suite 1000, Los Angeles, CA 90024, U.S.A.  
Phone: 1-800-541-7878 Fax: 1-800-541-7879

**TOPCON CORPORATION DUBAI OFFICE**  
10000 Wilshire Blvd., Suite 1000, Los Angeles, CA 90024, U.S.A.  
Phone: 1-800-541-7878 Fax: 1-800-541-7879

**TOPCON CORPORATION DUBAI OFFICE**  
10000 Wilshire Blvd., Suite 1000, Los Angeles, CA 90024, U.S.A.  
Phone: 1-800-541-7878 Fax: 1-800-541-7879

**TOPCON CORPORATION DUBAI OFFICE**  
10000 Wilshire Blvd., Suite 1000, Los Angeles, CA 90024, U.S.A.  
Phone: 1-800-541-7878 Fax: 1-800-541-7879

**TOPCON CORPORATION DUBAI OFFICE**  
10000 Wilshire Blvd., Suite 1000, Los Angeles, CA 90024, U.S.A.  
Phone: 1-800-541-7878 Fax: 1-800-541-7879

**TOPCON CORPORATION DUBAI OFFICE**  
10000 Wilshire Blvd., Suite 1000, Los Angeles, CA 90024, U.S.A.  
Phone: 1-800-541-7878 Fax: 1-800-541-7879

**TOPCON CORPORATION DUBAI OFFICE**  
10000 Wilshire Blvd., Suite 1000, Los Angeles, CA 90024, U.S.A.  
Phone: 1-800-541-7878 Fax: 1-800-541-7879

**TOPCON CORPORATION DUBAI OFFICE**  
10000 Wilshire Blvd., Suite 1000, Los Angeles, CA 90024, U.S.A.  
Phone: 1-800-541-7878 Fax: 1-800-541-7879

**TOPCON CORPORATION DUBAI OFFICE**  
10000 Wilshire Blvd., Suite 1000, Los Angeles, CA 90024, U.S.A.  
Phone: 1-800-541-7878 Fax: 1-800-541-7879

**TOPCON CORPORATION DUBAI OFFICE**  
10000 Wilshire Blvd., Suite 1000, Los Angeles, CA 90024, U.S.A.  
Phone: 1-800-541-7878 Fax: 1-800-541-7879

**TOPCON CORPORATION DUBAI OFFICE**  
10000 Wilshire Blvd., Suite 1000, Los Angeles, CA 90024, U.S.A.  
Phone: 1-800-541-7878 Fax: 1-800-541-7879

**TOPCON CORPORATION DUBAI OFFICE**  
10000 Wilshire Blvd., Suite 1000, Los Angeles, CA 90024, U.S.A.  
Phone: 1-800-541-7878 Fax: 1-800-541-7879

**TOPCON CORPORATION DUBAI OFFICE**  
10000 Wilshire Blvd., Suite 1000, Los Angeles, CA 90024, U.S.A.  
Phone: 1-800-541-7878 Fax: 1-800-541-7879

**TOPCON CORPORATION DUBAI OFFICE**  
10000 Wilshire Blvd., Suite 1000, Los Angeles, CA 90024, U.S.A.  
Phone: 1-800-541-7878 Fax: 1-800-541-7879

**TOPCON CORPORATION DUBAI OFFICE**  
10000 Wilshire Blvd., Suite 1000, Los Angeles, CA 90024, U.S.A.  
Phone: 1-800-541-7878 Fax: 1-800-541-7879

**TOPCON CORPORATION DUBAI OFFICE**  
10000 Wilshire Blvd., Suite 1000, Los Angeles, CA 90024, U.S.A.  
Phone: 1-800-541-7878 Fax: 1-800-541-7879

**TOPCON CORPORATION DUBAI OFFICE**  
10000 Wilshire Blvd., Suite 1000, Los Angeles, CA 90024, U.S.A.  
Phone: 1-800-541-7878 Fax: 1-800-541-7879

**TOPCON CORPORATION DUBAI OFFICE**  
10000 Wilshire Blvd., Suite 1000, Los Angeles, CA 90024, U.S.A.  
Phone: 1-800-541-7878 Fax: 1-800-541-7879

**TOPCON CORPORATION DUBAI OFFICE**  
10000 Wilshire Blvd., Suite 1000, Los Angeles, CA 90024, U.S.A.  
Phone: 1-800-541-7878 Fax: 1-800-541-7879

**TOPCON CORPORATION DUBAI OFFICE**  
10000 Wilshire Blvd., Suite 1000, Los Angeles, CA 90024, U.S.A.  
Phone: 1-800-541-7878 Fax: 1-800-541-7879

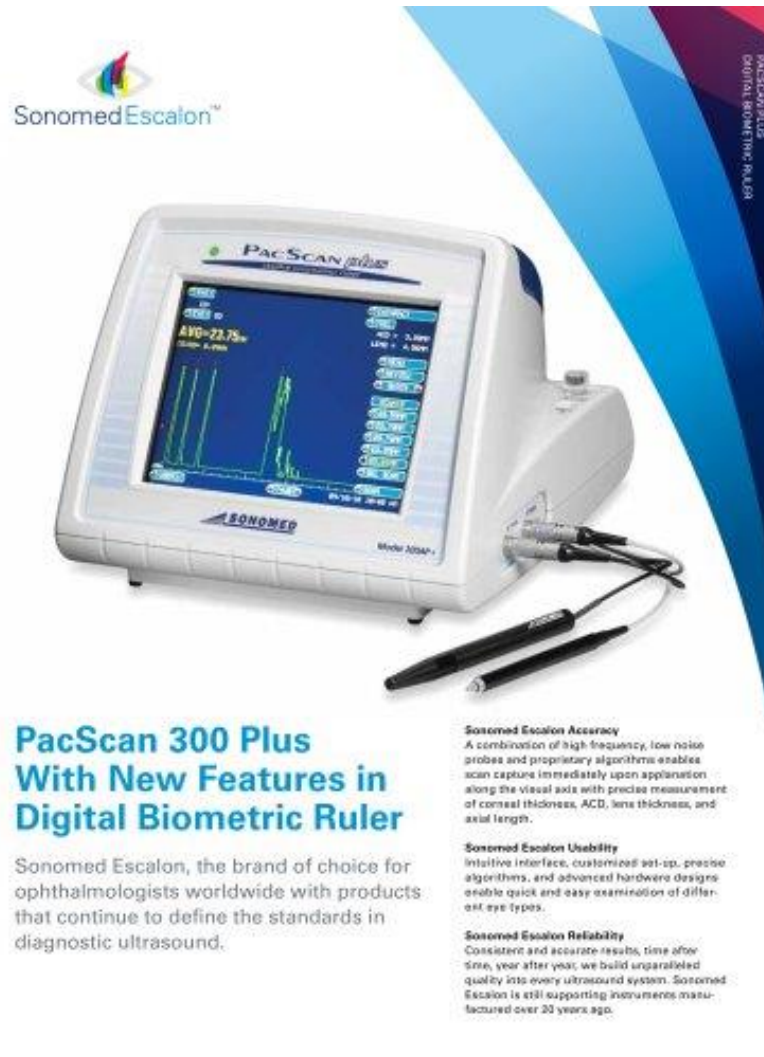
## Operation Microscope OMS-90



**TOPCON**  
CONNECTING VISIONS



## Ultrasound biometer



## Total Budget of the Project.

The total budget of the project is **£70,397** which includes purchasing of all the above-mentioned ophthalmic equipment.

## Project Location and Pictures

The acquired premises for the eye hospital are located at a busy area in Lahore and is accessible to everyone coming from any part of the country. The location, address and other details of the eye hospital are as under:

### Al Mustafa Eye Hospital

84/10 adjacent Board of Intermediate and Secondary Education Mozang Road Lahore



